

## Retrofit option

### ON WAKD D.0002

Wheel assembly kit

099-008035-EW501

Observe additional system documents!

10.07.2019

**Register now  
and benefit!  
Jetzt Registrieren  
und Profitieren!**

**[www.ewm-group.com](http://www.ewm-group.com)**



# General instructions

## WARNING



### **Read the operating instructions!**

**The operating instructions provide an introduction to the safe use of the products.**

- Read and observe the operating instructions for all system components, especially the safety instructions and warning notices!
- Observe the accident prevention regulations and any regional regulations!
- The operating instructions must be kept at the location where the machine is operated.
- Safety and warning labels on the machine indicate any possible risks. Keep these labels clean and legible at all times.
- The machine has been constructed to state-of-the-art standards in line with any applicable regulations and industrial standards. Only trained personnel may operate, service and repair the machine.
- Technical changes due to further development in machine technology may lead to a differing welding behaviour.

**In the event of queries on installation, commissioning, operation or special conditions at the installation site, or on usage, please contact your sales partner or our customer service department on +49 2680 181-0.**

**A list of authorised sales partners can be found at [www.ewm-group.com/en/specialist-dealers](http://www.ewm-group.com/en/specialist-dealers).**

Liability relating to the operation of this equipment is restricted solely to the function of the equipment. No other form of liability, regardless of type, shall be accepted. This exclusion of liability shall be deemed accepted by the user on commissioning the equipment.

The manufacturer is unable to monitor whether or not these instructions or the conditions and methods are observed during installation, operation, usage and maintenance of the equipment.

An incorrectly performed installation can result in material damage and injure persons as a result. For this reason, we do not accept any responsibility or liability for losses, damages or costs arising from incorrect installation, improper operation or incorrect usage and maintenance or any actions connected to this in any way.

### **© EWM AG**

Dr. Günter-Henle-Strasse 8  
56271 Mündersbach Germany  
Tel.: +49 2680 181-0, Fax: -244  
Email: [info@ewm-group.com](mailto:info@ewm-group.com)  
**[www.ewm-group.com](http://www.ewm-group.com)**

The copyright to this document remains the property of the manufacturer.

Copying, including extracts, only permitted with written approval.

The content of this document has been prepared and reviewed with all reasonable care. The information provided is subject to change; errors excepted.

**1 For your safety****1.1 Safety instructions****⚠ WARNING**

**Do not carry out any unauthorised repairs or modifications!**

**To avoid injury and equipment damage, the unit must only be repaired or modified by specialist, skilled persons!**

**The warranty becomes null and void in the event of unauthorised interference.**

- Appoint only skilled persons for repair work (trained service personnel)!



**Risk of accidents due to non-compliance with the safety instructions!**

**Non-compliance with the safety instructions can be fatal!**

- Carefully read the safety instructions in this manual!
- Observe the accident prevention regulations and any regional regulations!
- Inform persons in the working area that they must comply with the regulations!

**These supplementary sheets must be used in conjunction with the appropriate standard operating instructions for the described product! These supplementary sheets expand or replace one or more chapters of the same name(s) in the standard description.**

**Read and observe the operating instructions for all system components, especially the safety instructions!**

**1.2 Transport and installation****⚠ WARNING**

**Improper work carried out!**

**In the event of improper work carried out on the display stand, the display stand may lose stability, tip over and result in serious injury!**

- Only use the construction and fitting parts supplied!
- Do not load the display stand without reinforcement panels affixed!

**⚠ CAUTION**

**Improperly secured equipment!**

**Equipment, equipment combinations and accessories incorrectly fastened onto transport systems can tip over during transport and cause injuries!**

- Only used the original parts supplied to fasten the equipment.
- Use the systems only for transporting the machines .
- Check the fixing points before each transport and at regular intervals.



**Risk of accidents due to supply lines!**

**During transport, attached supply lines (mains leads, control cables, etc.) can cause risks, e.g. by causing connected machines to tip over and injure persons!**

- Disconnect all supply lines before transport!

## 2 Intended use

### 2.1 General

#### **WARNING**



##### **Hazards due to improper usage!**

The machine has been constructed to the state of the art and any regulations and standards applicable for use in industry and trade. It may only be used for the welding procedures indicated at the rating plate. Hazards may arise for persons, animals and material objects if the equipment is not used correctly. No liability is accepted for any damages arising from improper usage!

- The equipment must only be used in line with its designated purpose and by trained or expert personnel!
- Do not improperly modify or convert the equipment!

### 2.2 Applications

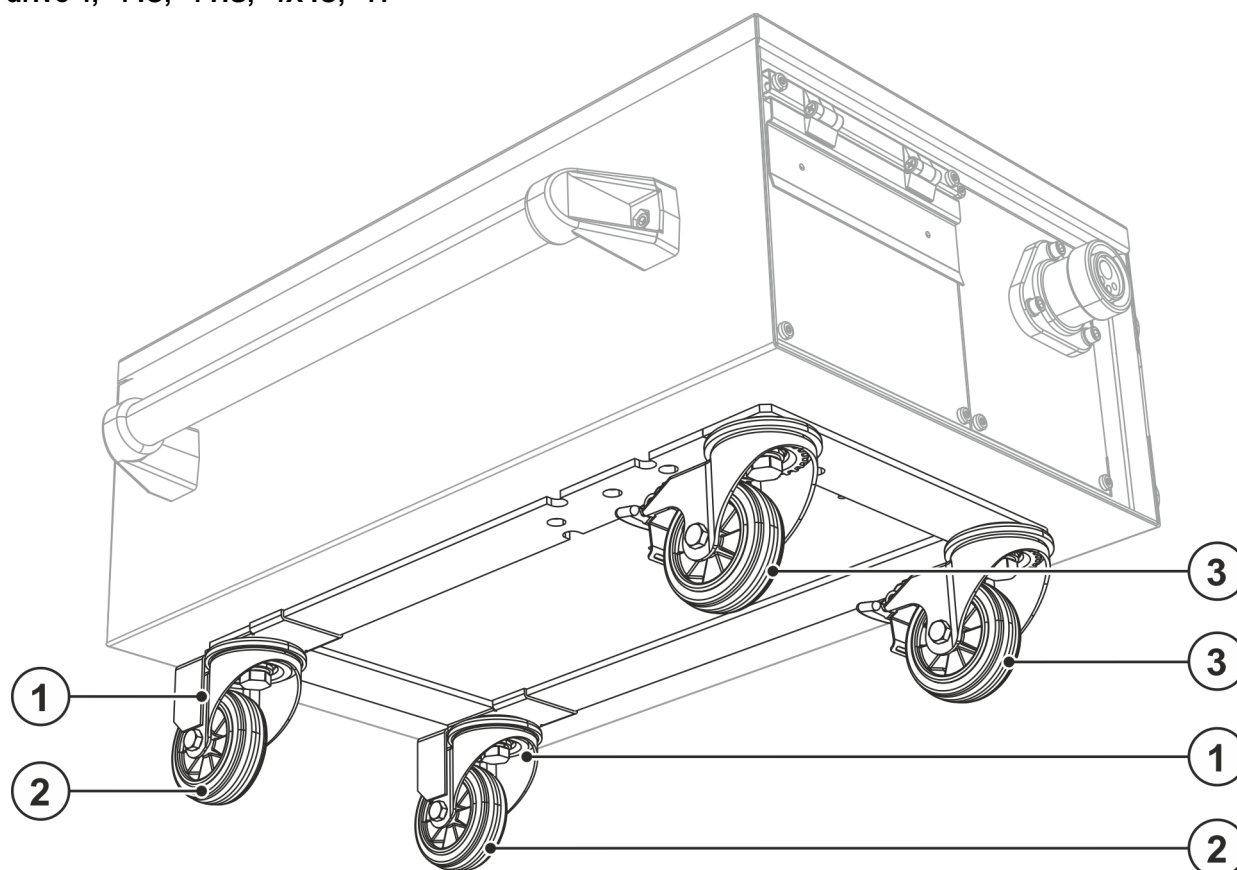
Use the option described below to add a wheel set to a wire feeder.

These instructions apply only for the conversion of the following machines:

- drive 4
- drive 41
- drive 4 HS
- drive 4 IC
- drive 4X IC

### 2.3 Short description of the working steps required

- Unscrew the existing machine feet
- Screw on the wheel assembly kit.

**2.4 Diagram of the assembled option****2.4.1 drive 4, -4 IC, -4 HS, -4X IC, -41***Figure 2-1*

Item	Symbol	Description
1		Anti-twist device
2		Wheels, guide castors
3		Wheels with locks

## 3 Conversion

### 3.1 General

#### **DANGER**



**Risk of injury from electric shock!**

**Servicing machines that are not disconnected from the mains can lead to serious injuries!**

- Disconnect the machine completely from the mains.  
Pull out the mains plug!
- Wait for 4 minutes until the capacitors have discharged!

**Before conversion, check that the retrofit kit is complete (see parts list).**

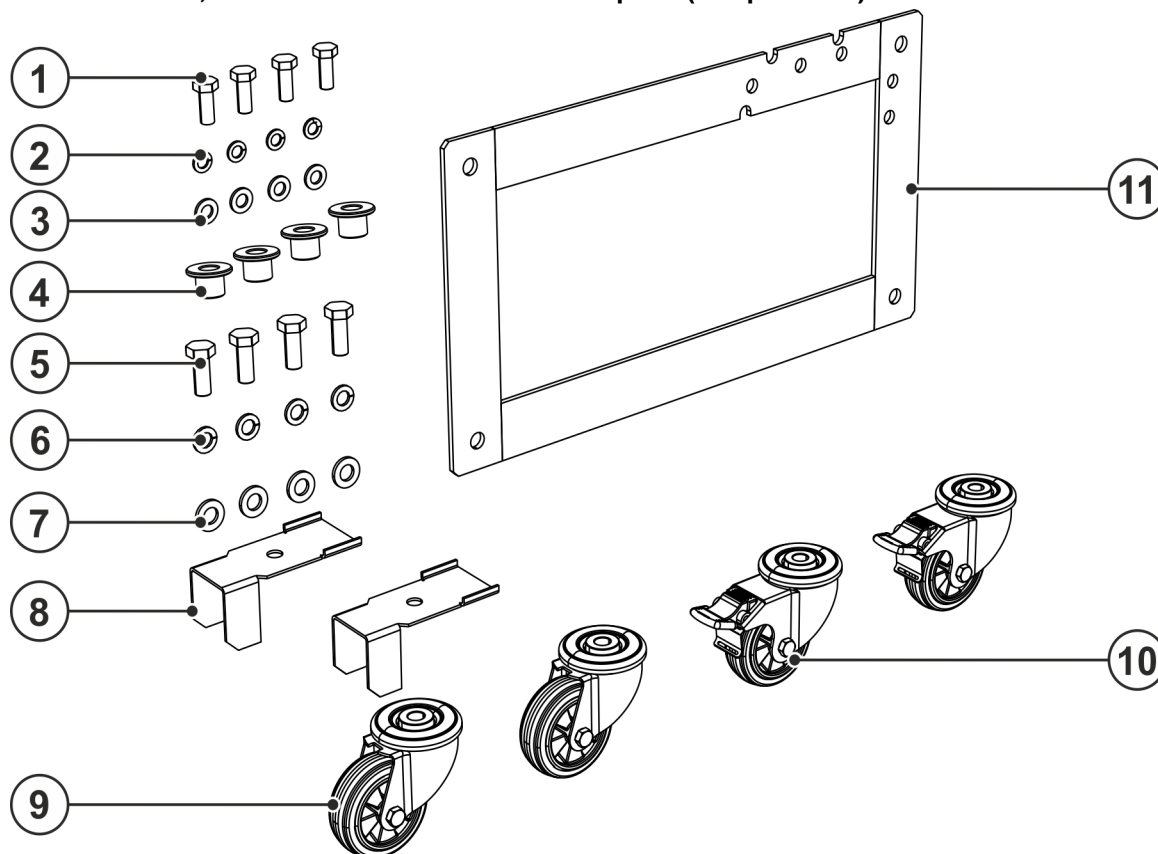


Figure 3-1

Item	Quantity	Description	Item number
1	4	Hexagon screw M8 x 35	064-000658-00000
2	4	Spring washer M8	064-000596-00000
3	4	Plain washer M8	064-000586-00000
4	4	Adapter wheel	094-024706-00000
5	4	Hexagon screw M12 x 35	064-000623-00000
6	4	Spring washer M12	064-000598-00000
7	4	M12 plain washer	064-000589-00000
8	2	Anti-twist device	094-019482-00000
9	2	Guide castor	094-000180-00001
10	2	Guide castor, with lock	094-000180-00002
11	1	Reinforcement panel	094-002100-00002

## 3.2 Preparations

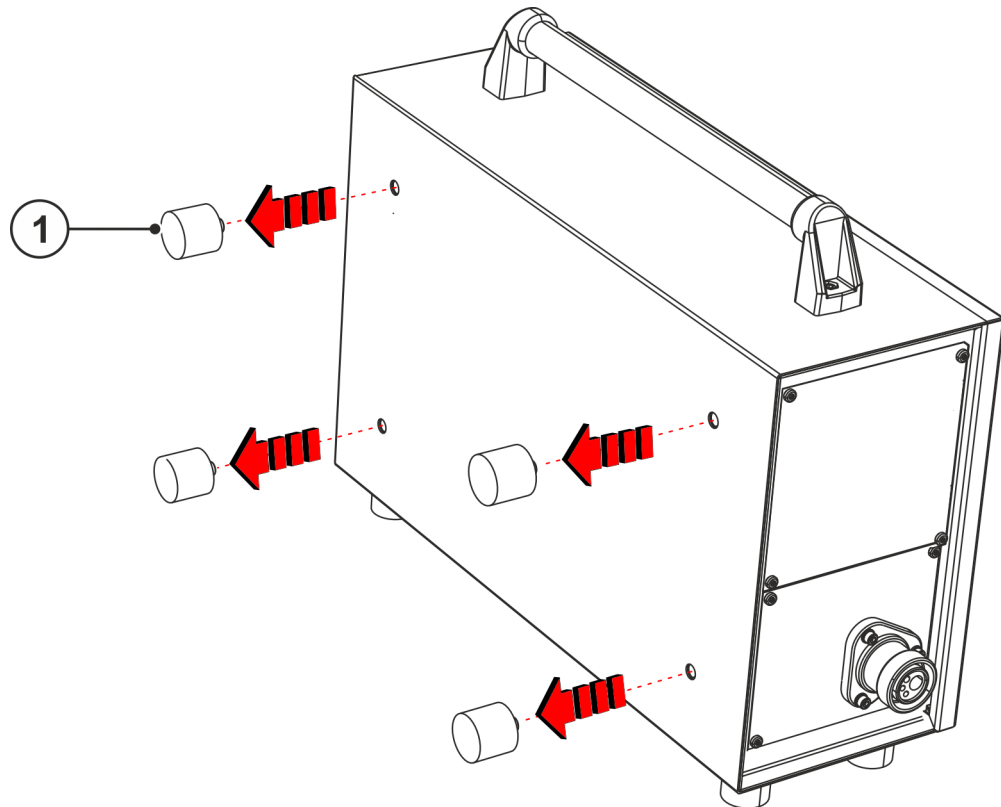


Figure 3-2

Item	Quantity	Description	Item number
1	4	Machine feet	

- Remove unit feet.

### 3.3 Assembly

#### ⚠ CAUTION



#### Improperly secured equipment!

Equipment, equipment combinations and accessories incorrectly fastened onto transport systems can tip over during transport and cause injuries!

- Only use the original parts supplied to fasten the equipment.
- Use the systems only for transporting the machines.
- Check the fixing points before each transport and at regular intervals.

Select the thread diameter of the fastening material according to the thread of the wire feeder.

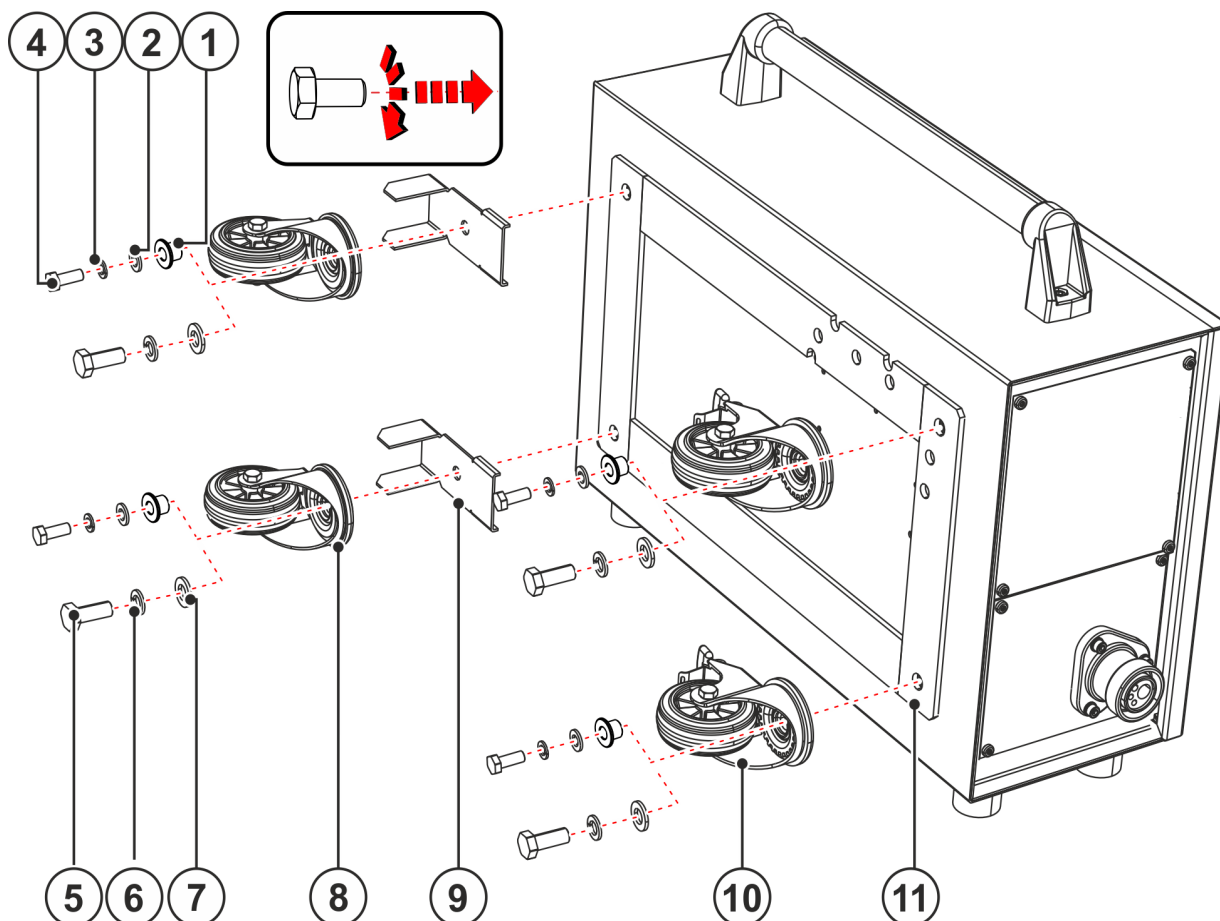


Figure 3-3

Item	Quantity	Description	Item number
1	4	Adapter wheel	094-024706-00000
2	4	Plain washer M8	064-000586-00000
3	4	Spring washer M8	064-000596-00000
4	4	Hexagon screw M8 x 35	064-000658-00000
5	4	Hexagon screw M12 x 35	064-000623-00000
6	4	Spring washer M12	064-000598-00000
7	4	M12 plain washer	064-000589-00000
8	2	Guide castor	094-000180-00001
9	2	Anti-twist device	094-019482-00000
10	2	Guide castor, with lock	094-000180-00002
11	1	Reinforcement panel	094-002100-00002



- Mount the guide castors as shown.
- Mount the guide castors with lock as shown.

### 3.4 Final inspection

#### WARNING



**Danger due to failure to carry out the final inspection!**

**Parts that are incorrectly fitted or that become loose are a source of danger.**

- Check all mechanical connections to ensure that they are fitted correctly!
- Carry out the final inspection!
- Carry out the functional test!

**Keep the conversion instructions with the machine documentation!**

**When ordering spare parts, ensure that the item number and serial number of the machine are quoted!**

## 4 Technical data

### 4.1 ON WAKD D.0002

The technical data given here completes or replaces the respective values in the standard operating instructions.

Height	+105 mm +4.1 inch
Weight	+5,3 kg +11.7 lb